

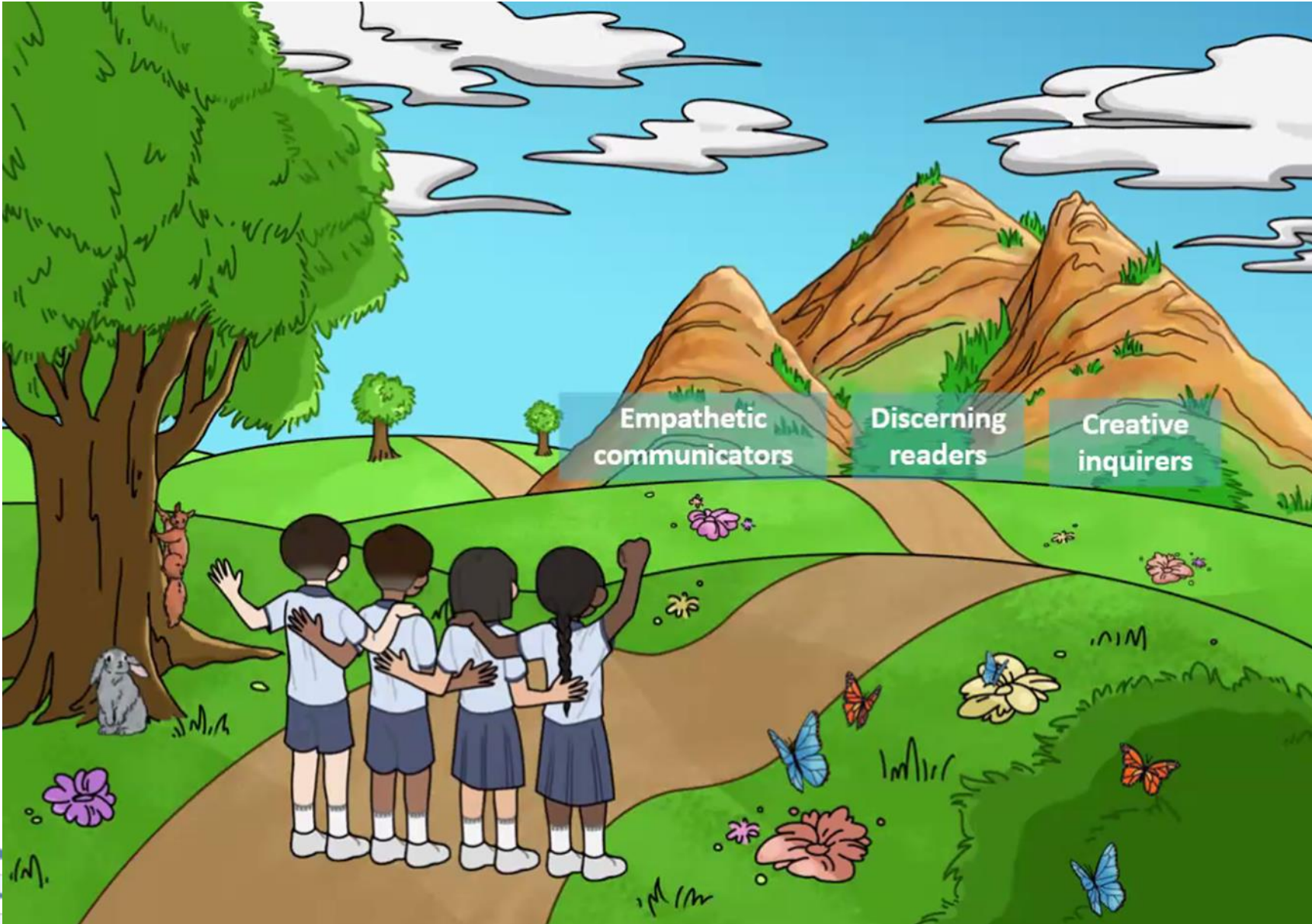


# P4 SUBJECT BRIEFING ENGLISH LANGUAGE



A COMMUNITY OF COMPASSIONATE LEADERS AND INNOVATORS





# English Language Syllabus 2020 Learner Outcomes

# Overview of P4 English Syllabus

## The STELLAR Approach

### STrategies for English Language Learning and Reading

#### Key Strategies

- Exploratory Talk
- Word Study
- Supported Reading
- K-W-L
- Annotation
- Explicit instruction of Grammar
- Teaching Vocabulary in context
- Writing Process Cycle

### The STELLAR Vision

To develop in our children **the love for reading** and build a **strong foundation in the English Language**

### STELLAR 2.0

Greater emphasis on

- **21st century competencies**
- **Desired EL Learner Outcomes** with attention to **core values**

# P4 English Assessment Matters

Holistic assessment through on-going formative and summative assessments.



Level	Term 1 LC %	Term 2 ORAL %	Term 3 WRITING %	Term 4 EYE %
P4	5	10	15	70





# Term 1

## Listening Comprehension

14 Questions – 14 Marks

- a) Picture matching
- b) Sequencing
- c) Note-taking
- d) Text comprehension

# Term 2

## Oral Presentation

- Students will need to prepare their presentation on a given topic.
- They will present to their classmates.

# Term 3

## Writing

20 marks

- Topic-based with helping words



# Term 4 – End of Year Examinations

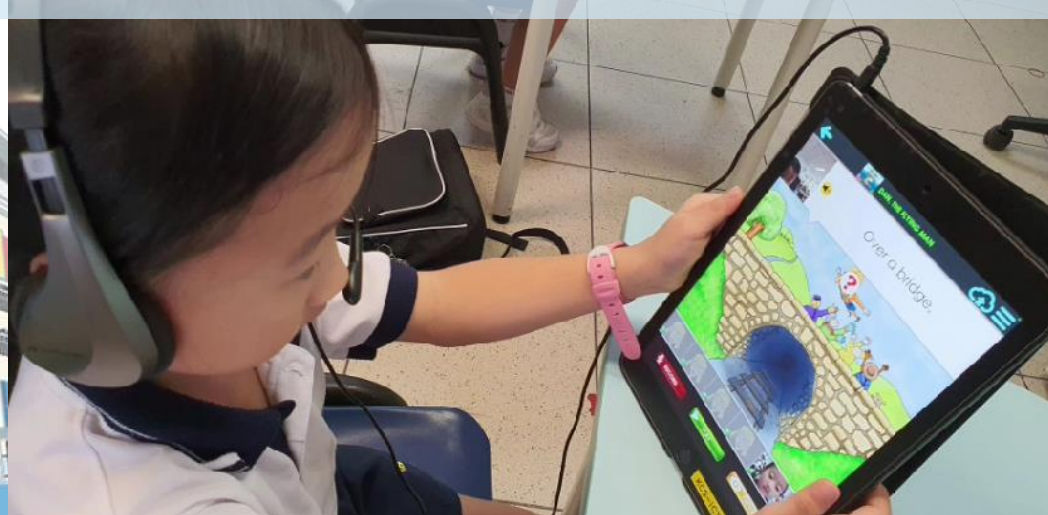
Paper	Component	Total Marks	Duration
1	Topic-based Composition Writing	20 marks	50 min
2	Language Use & Comprehension	50 marks	1h 15 min
3	Listening Comprehension	14 marks	Approximately 30 min
4	Oral <ul style="list-style-type: none"><li>- Reading aloud</li><li>- Stimulus-based Conversation</li></ul>	16 marks	Approximately 10 min





# P4 English Programmes/Activities

- Novel Reading Programme
- Language Fiesta activities/ Theatre Exposure
- Reading Remediation Programme (RRP)
- School-based Dyslexia Remediation Programme (SDR)



# Every Parent – A Supportive Partner



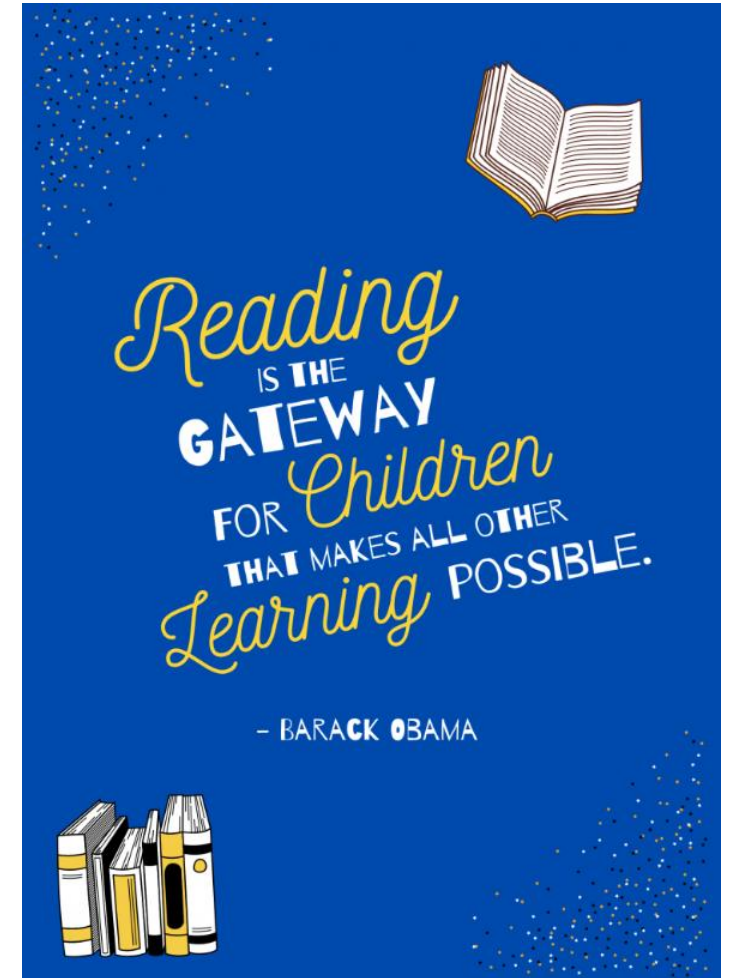
- ***Support*** and ***partnership*** of parents/guardians are crucial in developing dispositions for lifelong learning
- Parents/guardians play an important role in ***fostering the love for learning***





# Every Parent – A Supportive Partner

- Give your child the **time** and **space** to deepen their learning.
- **Read to** and **with** your child.
- Spend time **talking to them** about everyday events and **encourage them** to share their thoughts.



A group of diverse children and adults are arranged in a circle, looking up at the camera. The children are of various ethnicities and ages, some wearing glasses and school uniforms. The adults are also smiling and looking up. The background is a plain, light color. The text "Thank you" is written in a cursive font in the center of the image.

*Thank you*